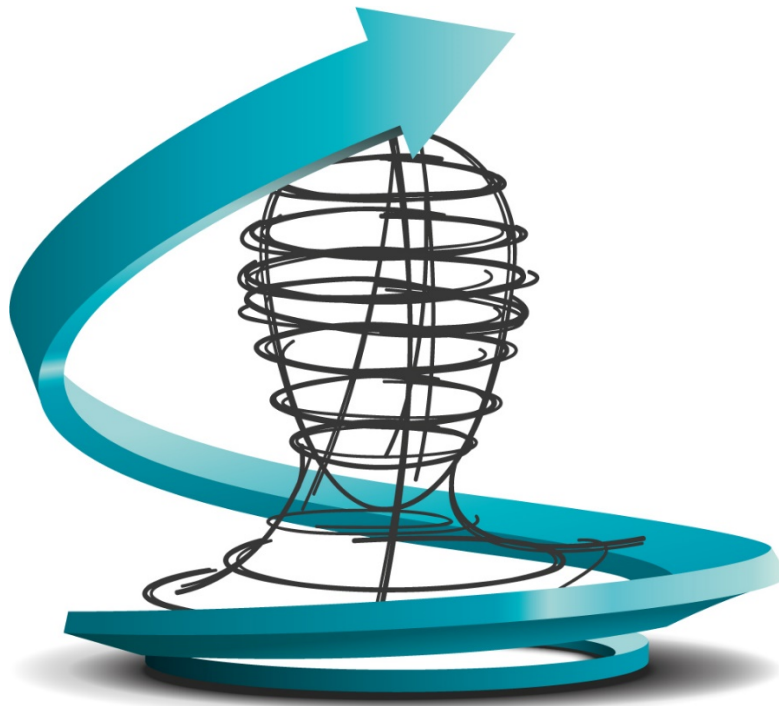




John Optimax



CAREER ORIENTATION REPORT **QUANTIFIED IDENTIFICATION OF CHARACTER**

PERSONAL AND CONFIDENTIAL

October 3, 2016

Copyright © 1994-2016 Optimax Human Performance Inc. All rights reserved.



TABLE OF CONTENTS

1.	INTRODUCTION.....	2
2.	SUMMARY.....	3
3.	ENERGETIC PARAMETERS.....	5
3.1	Dynamism	5
3.1.1	Dynamism Development.....	5
3.1.2	Motivation	7
3.2	Compliance	8
3.2.1	Tolerance	8
3.2.2	Persuadability	8
4.	INFORMATION PARAMETERS.....	9
4.1	Intellectual Level.....	9
4.1.1	Intelligence	9
4.1.2	Memory	9
4.1.3	Training.....	10
4.1.4	Creativity	10
4.2	Interests.....	11
4.2.1	Groups of Interests.....	11
4.2.2	Major Interests.....	12
4.2.3	Major Disinterests.....	13
5.	MAJOR POTENTIALS	14
5.1	People Handling	14
5.2	Management and Leadership	15
5.3	Business and Sales	16
6.	CAREER ORIENTATION	17
6.1.	Primary Career Potentials.....	17
6.2.	Secondary Career Potentials	18
6.3.	Top Career Potentials	20
6.4.	Career Position Development	21



1. INTRODUCTION

Assessment Administration

The following is the result of the Standard Character Assessment concerning **Mr. John Optimax**, based on the Optimax method of *Identification of Character*[™]. Optimax Human Performance Inc. administered the Optimax complete online Assessment on January 1, 2017.

Purpose of the Report

The purpose of this analysis is to provide a general overview of character, to indicate strengths and weaknesses and to identify personal interests.

Extendibility of Assessment Results

The Optimax method of assessment allows the report to be extended to cover other areas of interest based on the existing assessment results (no further assessment may be necessary). This particular analysis covers only a selection of personal characteristics.

Protection of Privacy

This report may contain sensitive personal information and is designated as "PERSONAL AND CONFIDENTIAL". It has been prepared strictly for personal use. Optimax Human Performance Inc. is committed to maintaining the highest standards of professional conduct. It therefore will not disclose the contents of the report, in whole or in part, to any other party, unless specifically authorized by the subject. Optimax reserves the right to use this report for promotional purposes, research, and any other activities deemed appropriate, but only in such a manner as to conceal the subject's identity.

Disclaimer of Liability

Optimax Human Performance, Inc. (Optimax) has made every effort to maintain the highest possible standards of professional integrity during the preparation of this assessment.

The nature of the Character Identification process is such that Optimax provides no guarantee, either expressed or implied, as to the suitability or accuracy of the assessment results or interpretation thereof. Optimax assumes no responsibility for report error incurred through either misunderstanding of assessment instructions or inaccurate, misleading, or otherwise invalid answers.

Optimax is not liable for any damages including loss of profits, loss of savings, interruption of business or any harmful consequences from the implementation, distribution, interpretation or comprehension of this report.



www.optimax.org
info@optimax.org
(905) 275-5397



6. CAREER ORIENTATION

6.1. Primary Career Potentials

MANAGEMENT (85.38)

↑ Strengths - management, organizing, leadership, caring, people handling, teaching, storytelling,
↓ Weaknesses - social sciences, ethnography, history, economy, business, commerce, languages, politics, law,

NURSING (83.01)

↑ Strengths - nursing, caring, medicine, medical sciences, people handling, psychology, teaching, management, organizing, chemistry, biology, storytelling,
↓ Weaknesses - social sciences, ethnography, history, passive literature, languages,

PEOPLE HANDLING (82.18)

↑ Strengths - people handling, psychology, storytelling, caring, teaching, active acting,
↓ Weaknesses - social sciences, ethnography, languages,

DESIGNING (80.43)

↑ Strengths - designing, drawing, painting, sculpturing,
↓ Weaknesses - There are not identified significant weaknesses.

PHOTOGRAPHY (93.84)

↑ Strengths - photography,
↓ Weaknesses - There are not identified significant weaknesses.

PLAYING INSTRUMENTS (81.48)

↑ Strengths - playing instruments, creating music, music listening, singing,
↓ Weaknesses - There are not identified significant weaknesses.

CREATING MUSIC (92.15)

↑ Strengths - creating music, playing instruments, music listening, singing,
↓ Weaknesses - There are not identified significant weaknesses.

SINGING (92.21)

↑ Strengths - singing, playing instruments, creating music, music listening,
↓ Weaknesses - There are not identified significant weaknesses.

COMPETITIVE SPORTS (92.90)

↑ Strengths - competitive sports, recreational sports, coaching sports, passive sports,
↓ Weaknesses - There are not identified significant weaknesses.

SPORTS MANAGEMENT (80.56)

↑ Strengths - passive sports, management, organizing, competitive sports, recreational sports, leadership, people handling,
↓ Weaknesses - There are not identified significant weaknesses.



COACHING SPORTS (80.56)

↑ Strengths - coaching sports, competitive sports, teaching, recreational sports, passive sports, people handling, psychology, management, organizing, leadership, storytelling,

↓ Weaknesses - There are not identified significant weaknesses.

6.2. Secondary Career Potentials

LEADERSHIP (70.37)

↑ Strengths - leadership, management, organizing, caring, people handling, psychology, didactic, teaching, active acting, storytelling,

↓ Weaknesses - social sciences, ethnography, history, commerce, languages, politics,

MEDICINE (73.13)

↑ Strengths - medicine, medical sciences, nursing, caring, people handling, psychology, didactic, teaching, management, leadership, organizing, chemistry, biology, storytelling,

↓ Weaknesses - social sciences, ethnography, history, passive literature, languages,

PSYCHOLOGY (70.91)

↑ Strengths - psychology, people handling, storytelling, caring, didactic, teaching, active acting,

↓ Weaknesses - social sciences, ethnography, languages,

DIDACTIC (76.14)

↑ Strengths - didactic, teaching, storytelling, passive acting, creative writing, people handling,

↓ Weaknesses - history,

TEACHING (76.17)

↑ Strengths - teaching, people handling, didactic, storytelling, management, organizing, leadership, caring, psychology, creative writing,

↓ Weaknesses - social sciences, ethnography, history, passive literature, languages,

ASTRONOMY (74.30)

↑ Strengths - astronomy, physics, chemistry, IT,

↓ Weaknesses - mathematics,

CHEMISTRY (67.46)

↑ Strengths - chemistry, physics, biology,

↓ Weaknesses - There are not identified significant weaknesses.

ZOOLOGY (68.92)

↑ Strengths - zoology, veterinary,

↓ Weaknesses - There are not identified significant weaknesses.



VETERINARY (68.30)

- ↑ Strengths - veterinary, zoology, biology, caring, nursing, medicine, medical sciences,
- ↓ Weaknesses - There are not identified significant weaknesses.

GEOGRAPHY (65.38)

- ↑ Strengths - geography, zoology,
- ↓ Weaknesses - geology, agriculture, nature, botany, archeology,

AUTOMATION (62.35)

- ↑ Strengths - automation, IT,
- ↓ Weaknesses - mathematics,

ARCHITECTURE (74.64)

- ↑ Strengths - architecture, drawing, painting, designing, management, organizing, IT, geography, physics,
- ↓ Weaknesses - mathematics, history, geology,

HANDYMAN (78.26)

- ↑ Strengths - handyman,
- ↓ Weaknesses - There are not identified significant weaknesses.

HANDICRAFT (68.92)

- ↑ Strengths - handicraft,
- ↓ Weaknesses - There are not identified significant weaknesses.

DRAWING & PAINTING (73.25)

- ↑ Strengths - drawing, painting, sculpturing, designing,
- ↓ Weaknesses - There are not identified significant weaknesses.

SCULPTURING (69.67)

- ↑ Strengths - sculpturing, drawing, painting, designing,
- ↓ Weaknesses - There are not identified significant weaknesses.

REFERRING SPORTS (63.24)

- ↑ Strengths - passive sports, competitive sports, recreational sports, coaching sports, psychology, teaching, leadership,
- ↓ Weaknesses - law, social sciences,

ACTING (61.33)

- ↑ Strengths - active acting, passive acting, people handling, psychology, photography, playing instruments, creating music, music listening, singing, recreational sports, storytelling,
- ↓ Weaknesses - social sciences, ethnography, history, dancing, languages,



6.3. Top Career Potentials

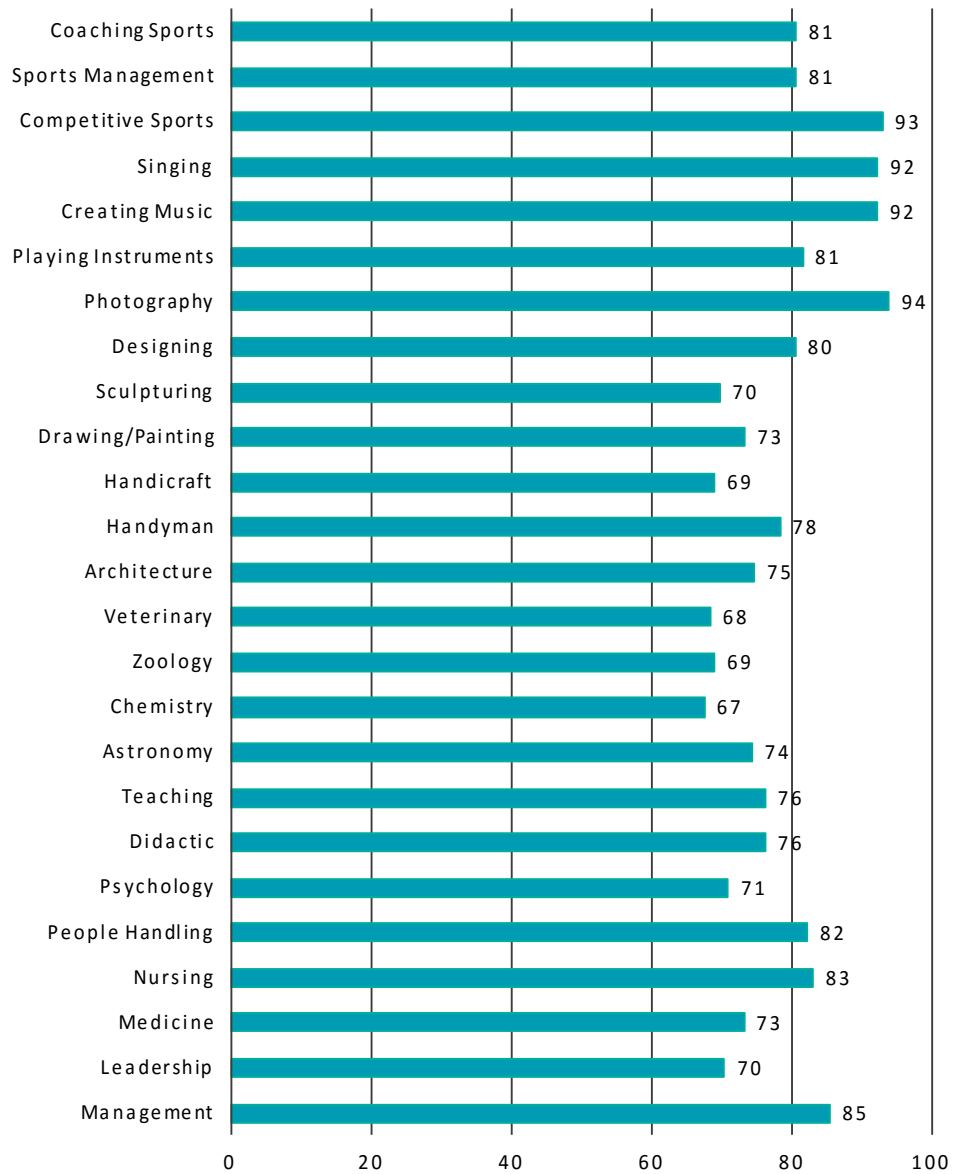


Fig. 13. Top Career Potentials

0 - 20 Not Recommended
 21 - 40 Low Recommendation
 41 - 60 Conditional Recommendation
 61 - 80 High Recommendation
 81 - 100 Very High Recommendation



6.4. Career Position Development

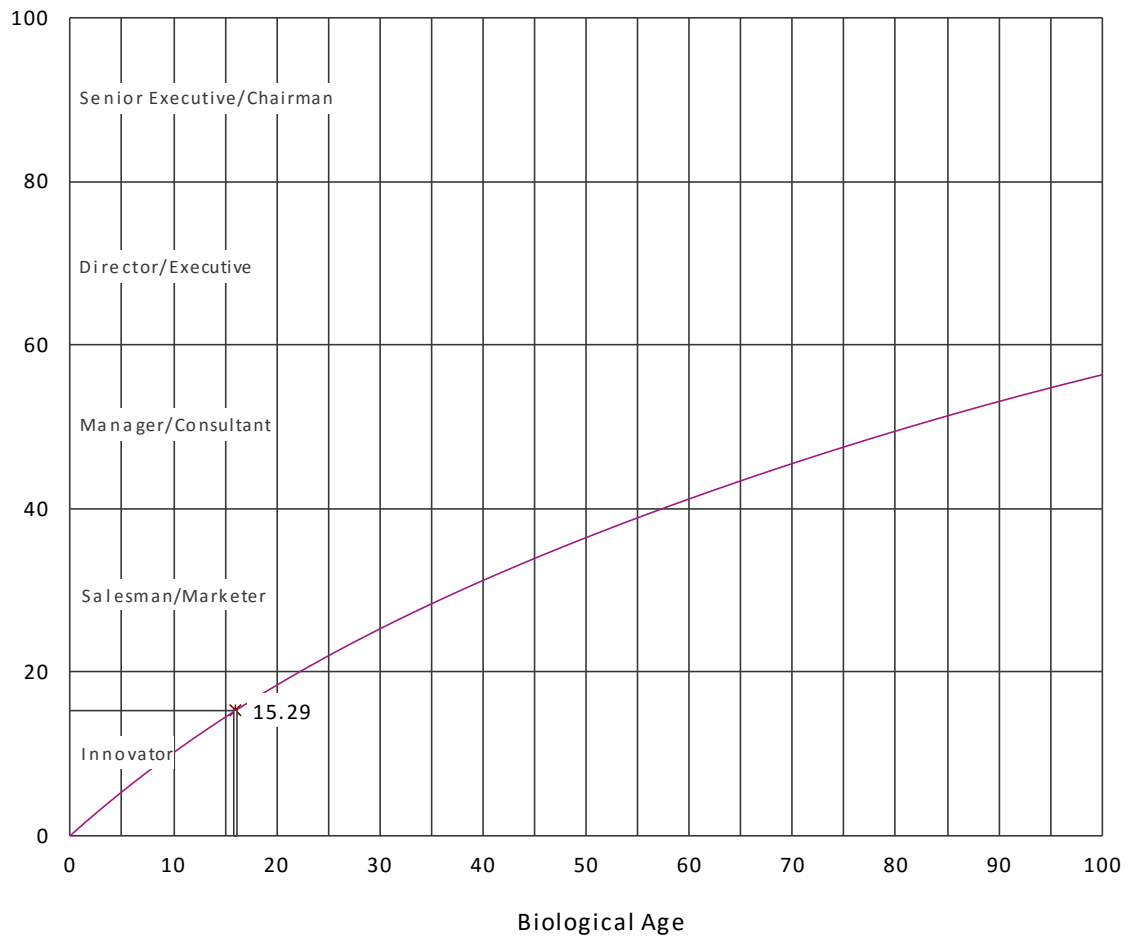


Fig. 14. Career Position Development Curve

